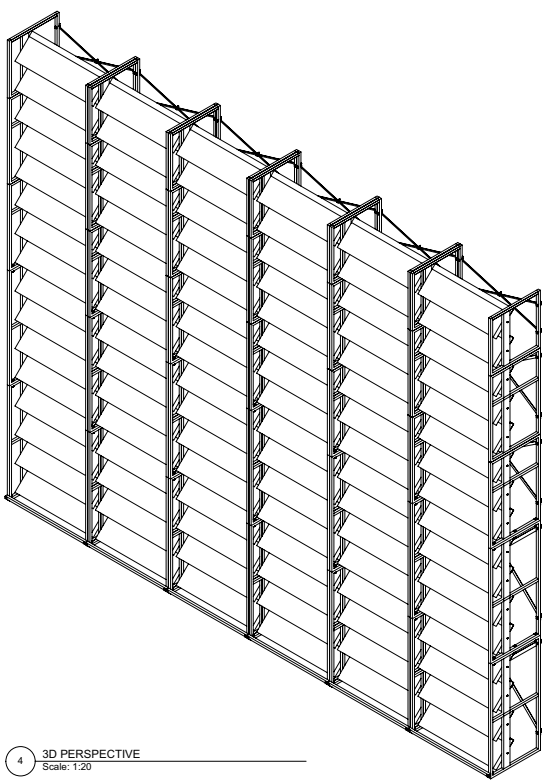
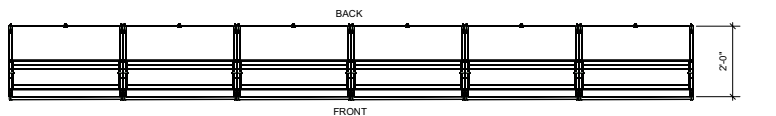


1 FRONT
Scale: 1:20

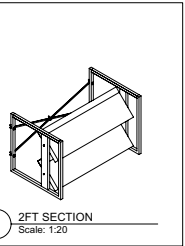
3 SIDE
Scale: 1:20



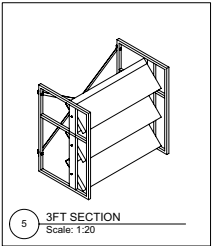
4 3D PERSPECTIVE
Scale: 1:20



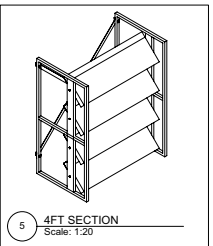
2 TOP
Scale: 1:20



5 2FT SECTION
Scale: 1:20



5 3FT SECTION
Scale: 1:20



5 4FT SECTION
Scale: 1:20

LED LOUVER TOWER

No.	Date	Appr.	Revision Notes

No.	Date	Issue Notes



Project Title: VIVID LIGHTING SOLUTIONS
UNIT 21
1610 DERWENT WAY
DELTA, BC V3M 6W1

Lighting Designer: PHIL GUHL

Project Title: LED LOUVER TOWER

Drawing Title: DESIGN PLANS

Project Manager: NA Project ID: DESIGN PLANS

Drawn By: TIM SMART Scale: Sheet Scale

Checked By: NA Drawing No. Drawing No.

Date: _____ of _____
Total Sheets

- NOTES:**
- 1) SIX INDEPENDENT 16FT. LOUVER TOWERS
 - 2) EACH TOWER IS COMPRISED OF (2) 4FT. (2) 3FT. (1) 2FT. SECTIONS
 - 3) EACH TOWER HAS 16 PLEXI BOXES.
 - 4) EACH PLEXI BOX CONTAINS (3) 1FT. I-COLOR COVE MX LED FIXTURES
 - 5) EACH 16FT. TOWER CONTAINS (48) I-COLOR COVE MX LED FIXTURES
 - 6) SIX TOWERS PACKED AS A WALL (see above) CONTAINS 288 I-COLOR COVE MX LED FIXTURES
 - 7) EACH LED LIGHT IS FULLY CONTROLLABLE VIA DMX CONTROL
 - 8) SIX TOWERS IS CONTROLLED OVER 2 DMX UNIVERSES
 - 9) SIX TOWERS COMBINED CAN OPERATE SAFELY OFF TWO 15AMP CIRCUITS
 - 10) EACH TOWER IS SHIPPED IN ONE SELF CONTAINED CRATE (200KG. 37.5"W X 45.5"H X 51.5"L)
 - 11) EACH TOWER TAKES APROX. 45 MINS TO ASSEMBLE/CABLE BY TWO PEOPLE